

***DURMA***

COMPACT LASER

---





## DURMAZLAR

---

Durmazlar machinery, founded in 1956, was the first sheet metal working machines manufacturer in Turkey.

The first production of Durmazlar was a manual sheet cutting machine. Nowadays Durmazlar is proudly offering a wide range of products in sheet metal working industry.

Durmazlar with its annually 6000 machine production capacity in its 150.000 square meter area, is the biggest sheet metal working machine producer company worldwide.

Durmazlar is offering its products with the brand name DURMA. Main technologies offered in Durmazlar are as follows.

- Laser cutting technology
- Punch and forming technology
- Plasma cutting technology
- Bending technology
- Cutting technology
- Combined shearing technology
- Programming systems
- Automation technology
- Plate roll bending
- Profile bending
- Bandsaw

Durmazlar is working and continuously investing for its employee and production in order to achieve better success, better technology and better environment with its 1000 employee,. The company is aiming to be effective on its customer's future improvements and to share big ideas by offering the latest technologies under the most competitive circumstances and forecasting their future requirements.

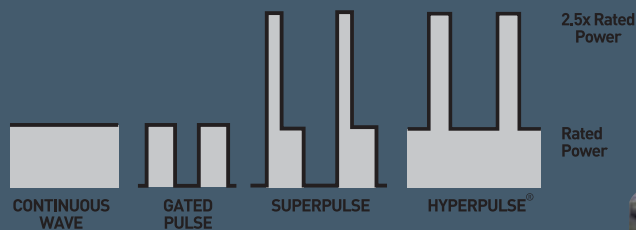
DURMA is world class brand name which is serving the world technology to its customers in 82 countries and growing together with them.

---

---

## **DURMA** COMPACT LASER

- Cost oriented & Intelligent solutions to todays laser cutting needs
- 2,5 KW CO2 Tribune Laser resonator for High performance & low operating and maintainence cost
- Small footprint
- Quick setup, high performance automatic cutting
- Stres relieved O frame rigid monoblock body
- Parameter interference even during cutting
- No fundamental requirement



- Single enclosure design allowing for ease of integration
- Patented TURBOFLOW™ compressor and lifelong electrodes give laser unprecented internal optic life and provide virtually maintenance free operations
- Superior pulsing characteristics with four distinct pulse modes. Pulsing capabilities allow for fast rise time and up to 2.5 x peak power enhancement for quicker, more consistent Pierce times when cutting And industry leading 2 year & Unlimited hour warranty



**CONTROL UNIT**  
Siemens Sinumerik 840D

THE sinumerik 840D Powerline combines CNC, PLC and communication tasks on one NCU module. The NCU 573.5 provides maximum dynamics and accuracy on axis movements and I/O communication for laser machining.

The 840D powerline offers open architecture. This means machine is programmable flexibly according to customer needs.

- Pendant
- 15" TFT Color Display, 1024 x 768 pixels
- 40 GB HDD
- 1 GB SD RAM
- USB Interface for data transmission
- Ethernet interface
- Worldwide 2 years warranty
- Multilanguage user screens
- Laser interface
- Easy load, save, edit, create all cutting parameters
- Automatic cutting parameter loading according to material type and sheet thickness by the program
- Online parameter change even during cutting operation
- Speed-Power modulation in order to get Sharp edges
- Fast-follow , Head follows the sheet with high speed and precision
- Simple user interface parameter page , Power-Speed-Pressure combination
- Special laser cutting options
- Cutting possibility with air



## ACCUFOCUS CUTTING HEAD

### Non Contact Capacitive Sensor

Accufocus operates as an independent , closed loop control system.The system maintains optical focal point control with “ Non Contact capacitive sensor” which allows the tip to accurately follow the contours of the workpiece and cut as quickly and efficiently.

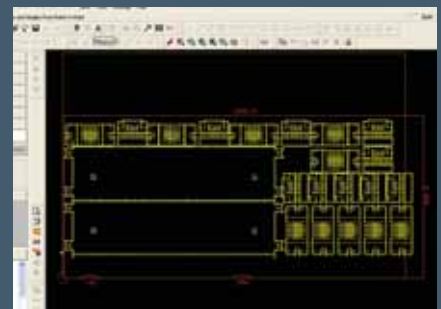
### Crash Protection

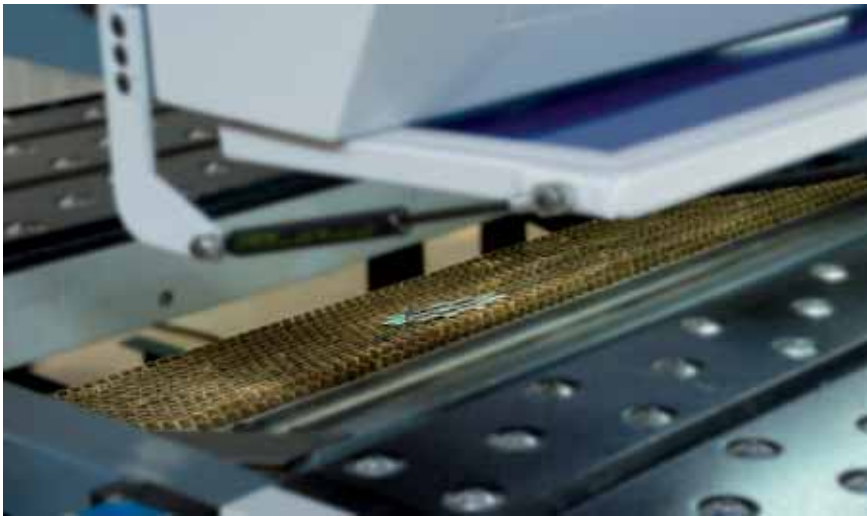
In case of and crash or interference to the head , it is designed with magnetic breakaway and a limit switch shuts down the system.

## CAD/CAM SOFTWARE

cncKAD offers entire Design to Production cycle covering the complete cycle of CNCoperation including

- Drafting
- Processing
- Parametric Programming
- Extensive Application Program Interface
- Auto Nesting
- Interactivity
- Grouping
- Multiple material nests
- Hole filling
- Multiple sheets





#### TABLE

- Brush & ball table
- Temperature resist brass brushes at cutting zone
- Powerful, 3 pieces clamping,
- Automatic Clamping system positions on the sheet according to program
- Reposition allows to process sheets longer than machine

#### Workchute

- 50x50 mm to 1250x500mm parts can be ejected automatically
- Eliminates non-slipping risk on the table
- The machine configuration and software algorithm allow several parts to be unloaded simultaneously

#### STANDARD EQUIPMENTS

- Compact, Hybrid system Laser Cutting Machine
- PRC STS 2500W Laser source (Resonator )
- Siemens 840D CNC Controller
- Color screen
- Metalix CAD CAM Software
- Filter
- Cooling unit
- Workchute
- Scrap discharge, conveyor band
- Laser Positioning diot ( Tracks the same way of laser beam on the sheet before cutting)
- Cutting head 5" , 7,5" lenses
- Changable lens holder for lenses with different focus length
- CE Safety equipment,
- Central lubrication system
- Scrap collection box
- Cooler with tropical version ( Prevents condensation in hot and humid environments)
- Commissioning and Installation.
- Metalix Cad/Cam software training
- Operator training (Machine usage)
- Operator training ( 3rd level Maintainence-repair)



***DURMA***

Durmazlar Makina Sanayi ve Ticaret A.Ş.

OSB 75. Yıl Bulvarı Bursa Türkiye  
Tel.: ++90 224 241 80 00 (pbx)  
Fax: ++90 224 242 75 80 (Sales)

[www.durmazlar.com.tr](http://www.durmazlar.com.tr)  
e-mail: [durma@durmazlar.com.tr](mailto:durma@durmazlar.com.tr)